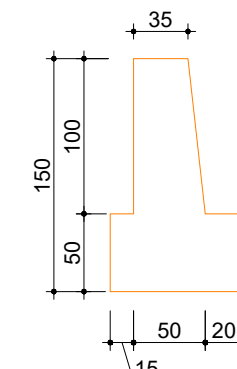
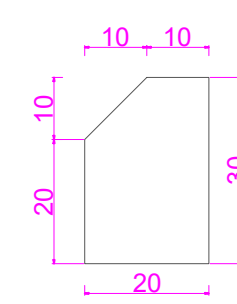


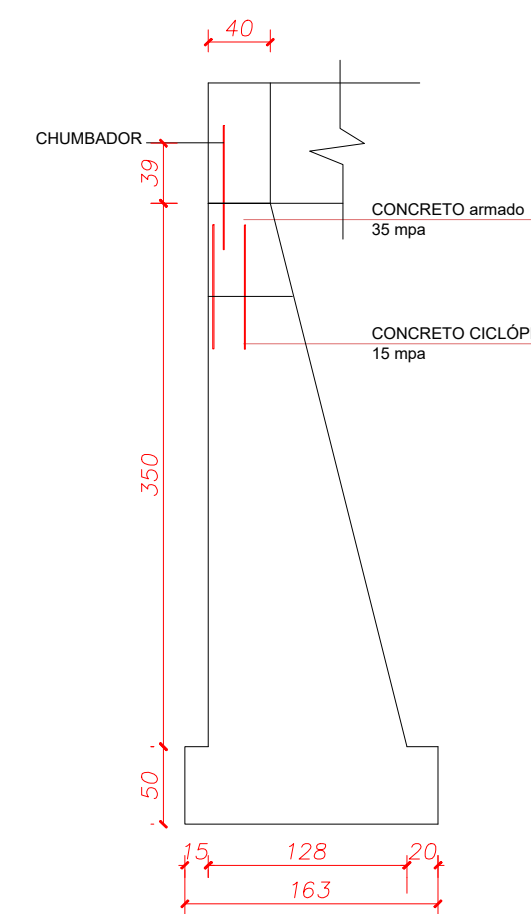
PONTE SOBRE O RIO SÃO TOMÉ, COMUNIDADE BRACATINGA, VÃO 12,00 M, H: 3,50M



DETALHE EXTREMIDADE DA ALA
ESCALA - 1:50



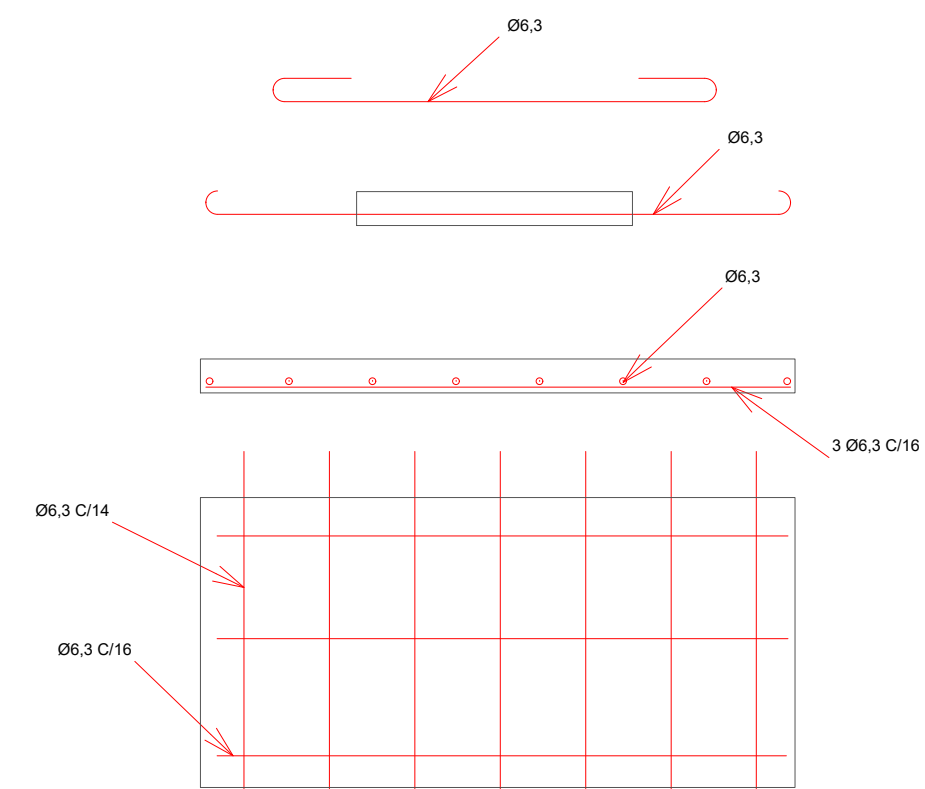
SEÇÃO GUARDA RODA
ESCALA = 1:50



SEÇÃO TRANSVERSAL
DO MURO
ESC : 1/25



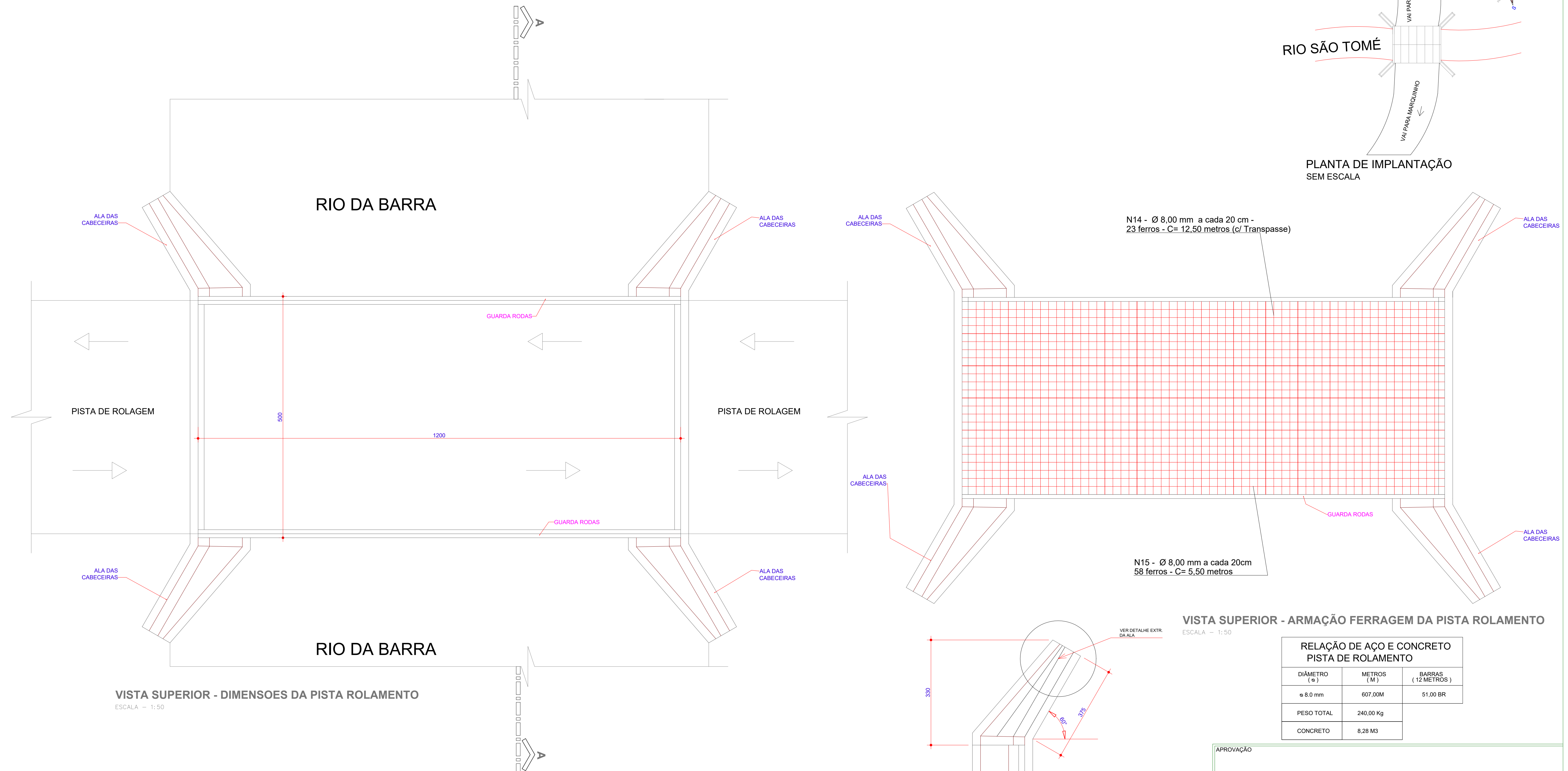
PERFIL B e C



PLACA 100x50

TABELA DE ARMADURAS

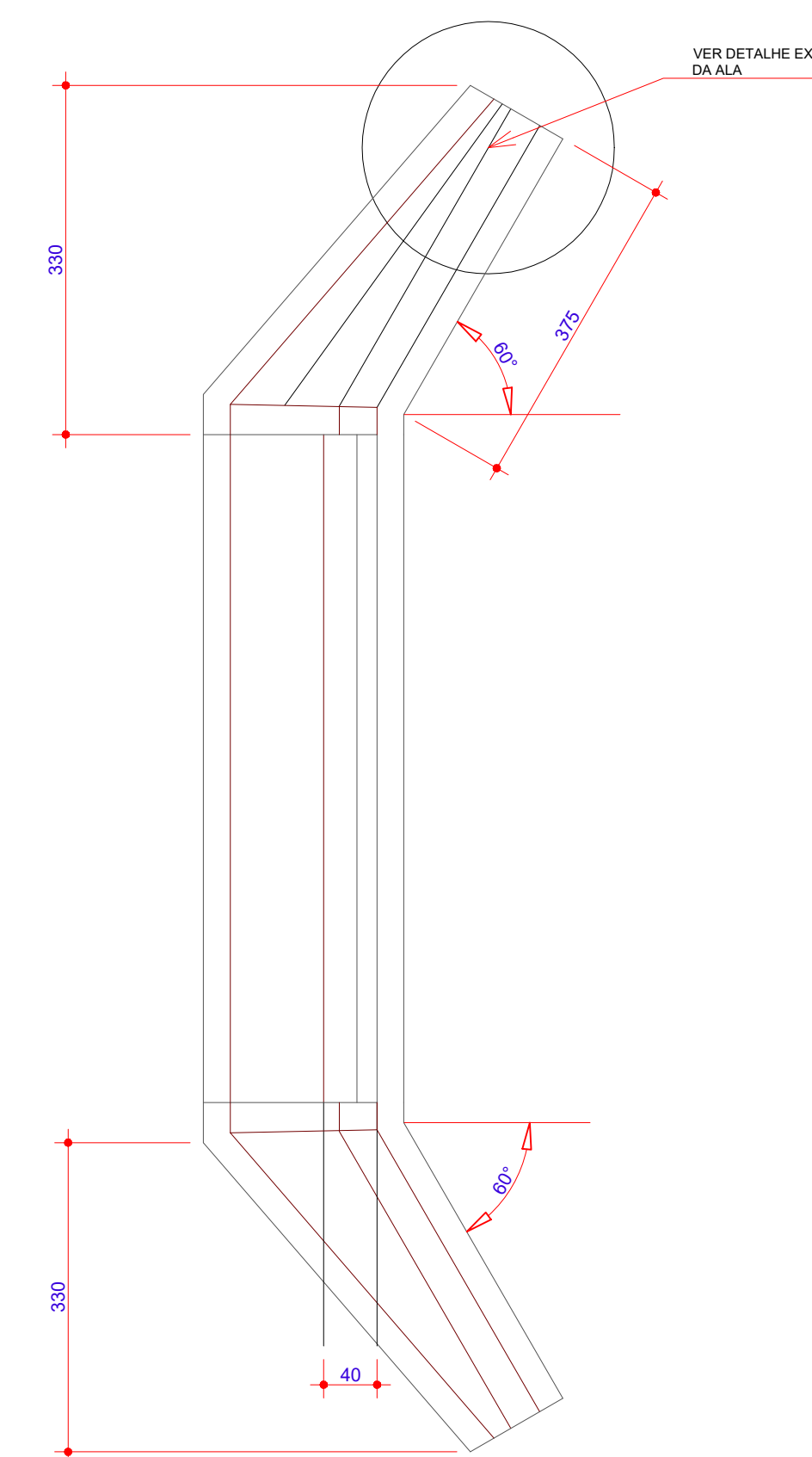
	Ø	Q	COMPRIMENTOS	
			UNITÁRIO	PARCIAL
	6,3	7	1,18	8,26
	6,3	3	0,97	2,91



VISTA SUPERIOR - ARMACÃO FERRAGEM DA PISTA ROLAMENTO

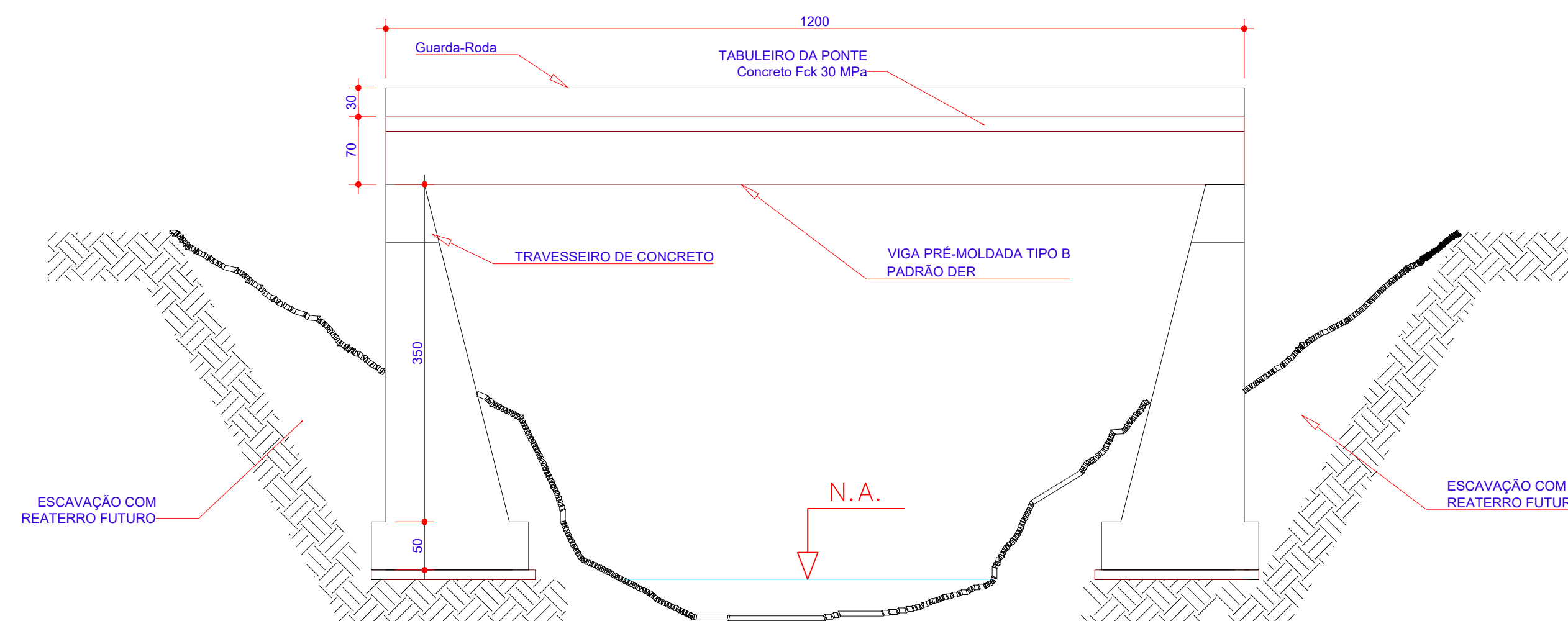
ESCALA = 1:50

<div> <div>RELACÃO DE AÇO E CONCRETO</div> <div>PISTA DE ROLAMENTO</div> </div>		
DIÂMETRO (ϕ)	METROS (M)	BARRAS (12 METROS)
ϕ 8.0 mm	607,00M	51,00 BR
PESO TOTAL	240,00 Kg	
CONCRETO	8,28 M3	



CABECEIRA (VISTA SUPERIOR)

ESCALA - 1:50



MURO EM CONCRETO PARA SOLO/ROCHA DE BOM SUPORTE

doi:10.1371/journal.pone.0142132.g002